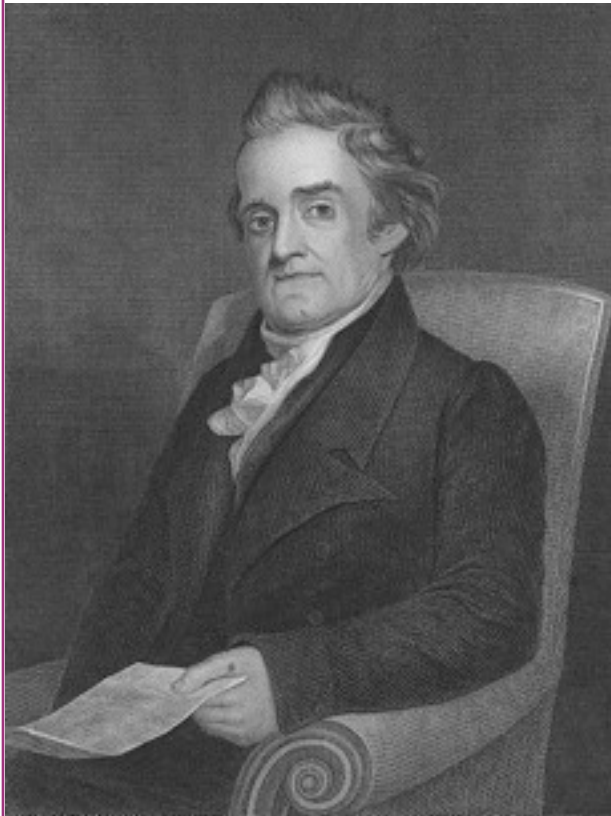


Topography

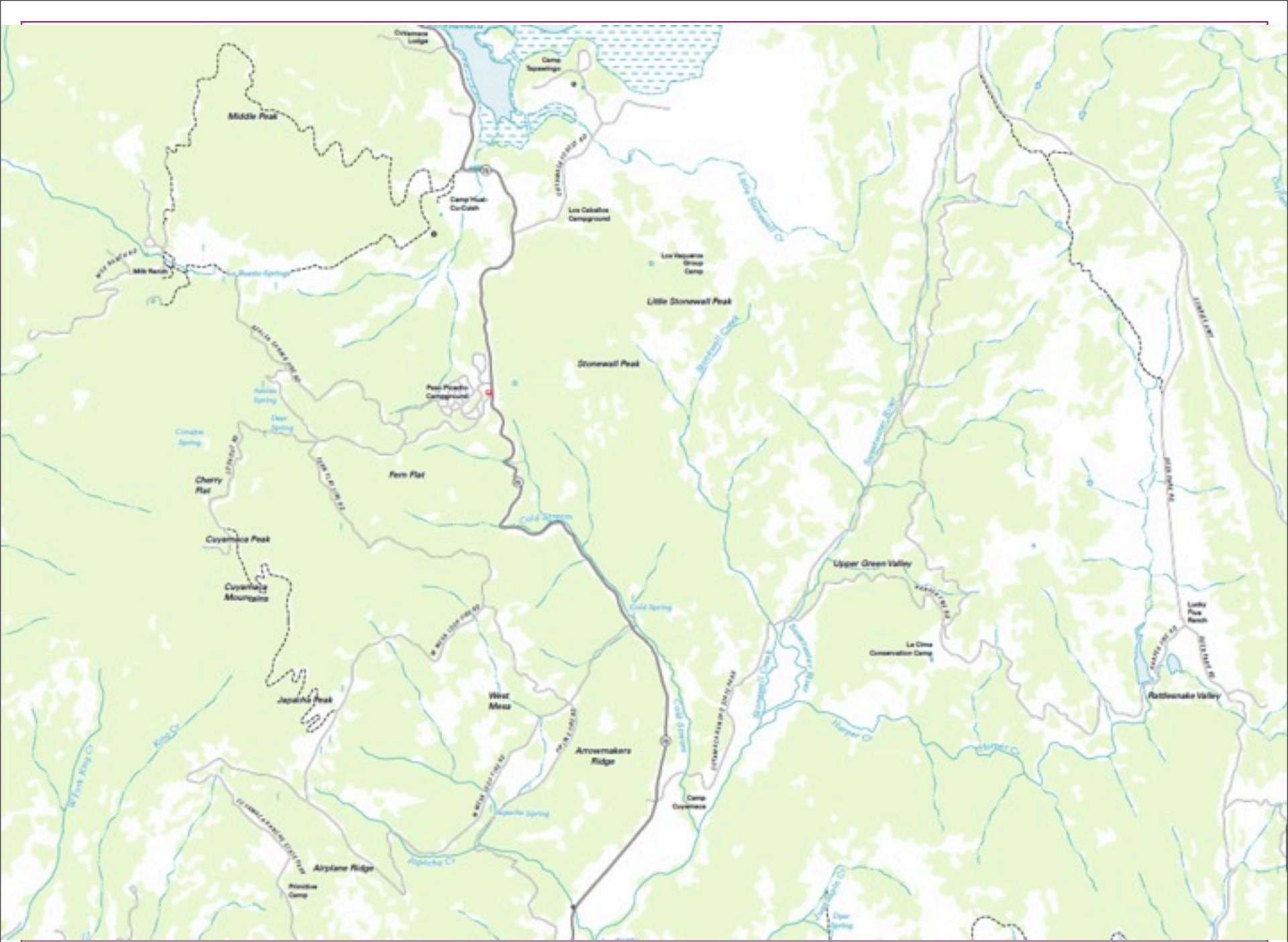


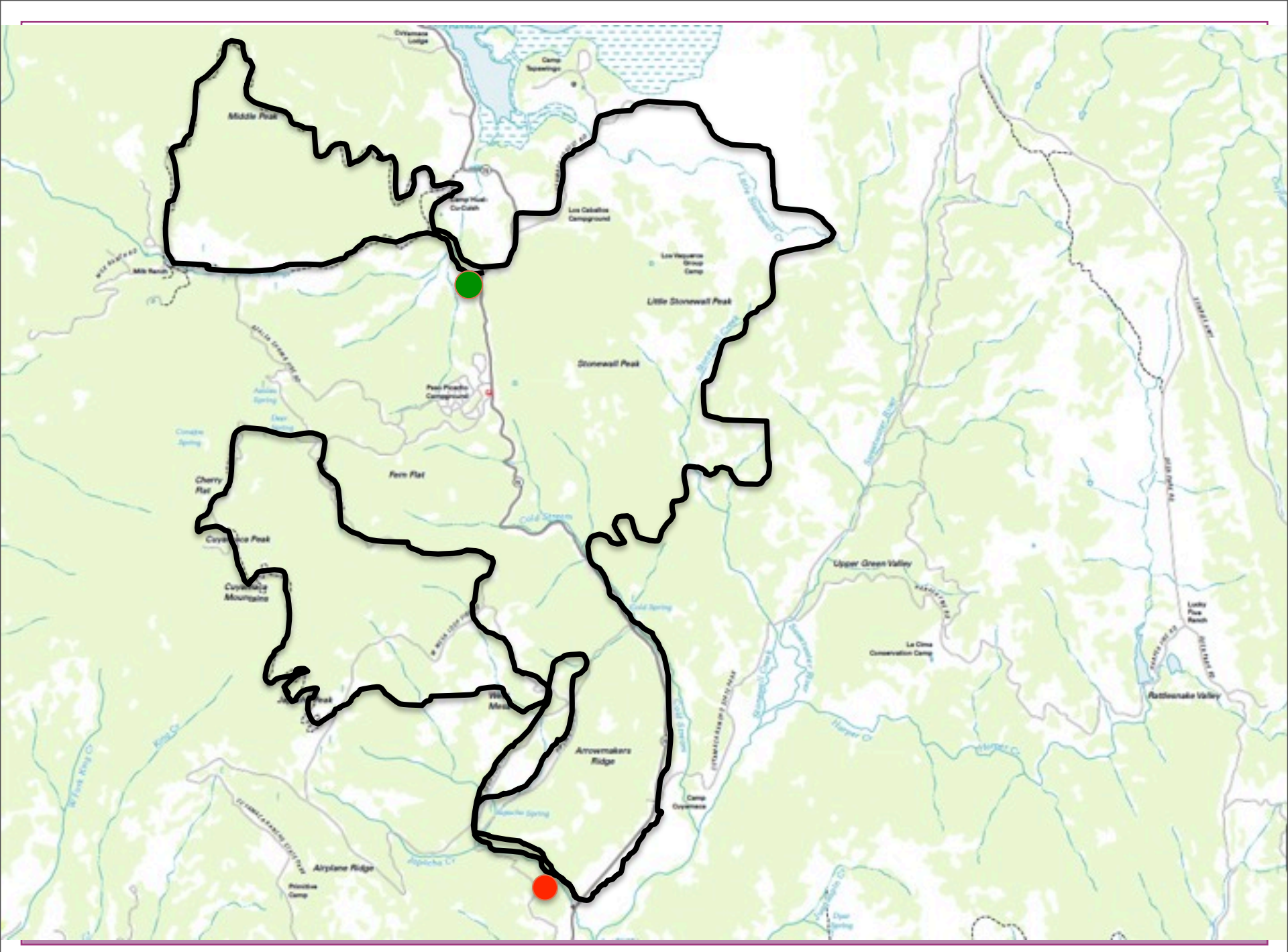
to·pog·ra·phy

noun \tə-'pä-grə-fē\

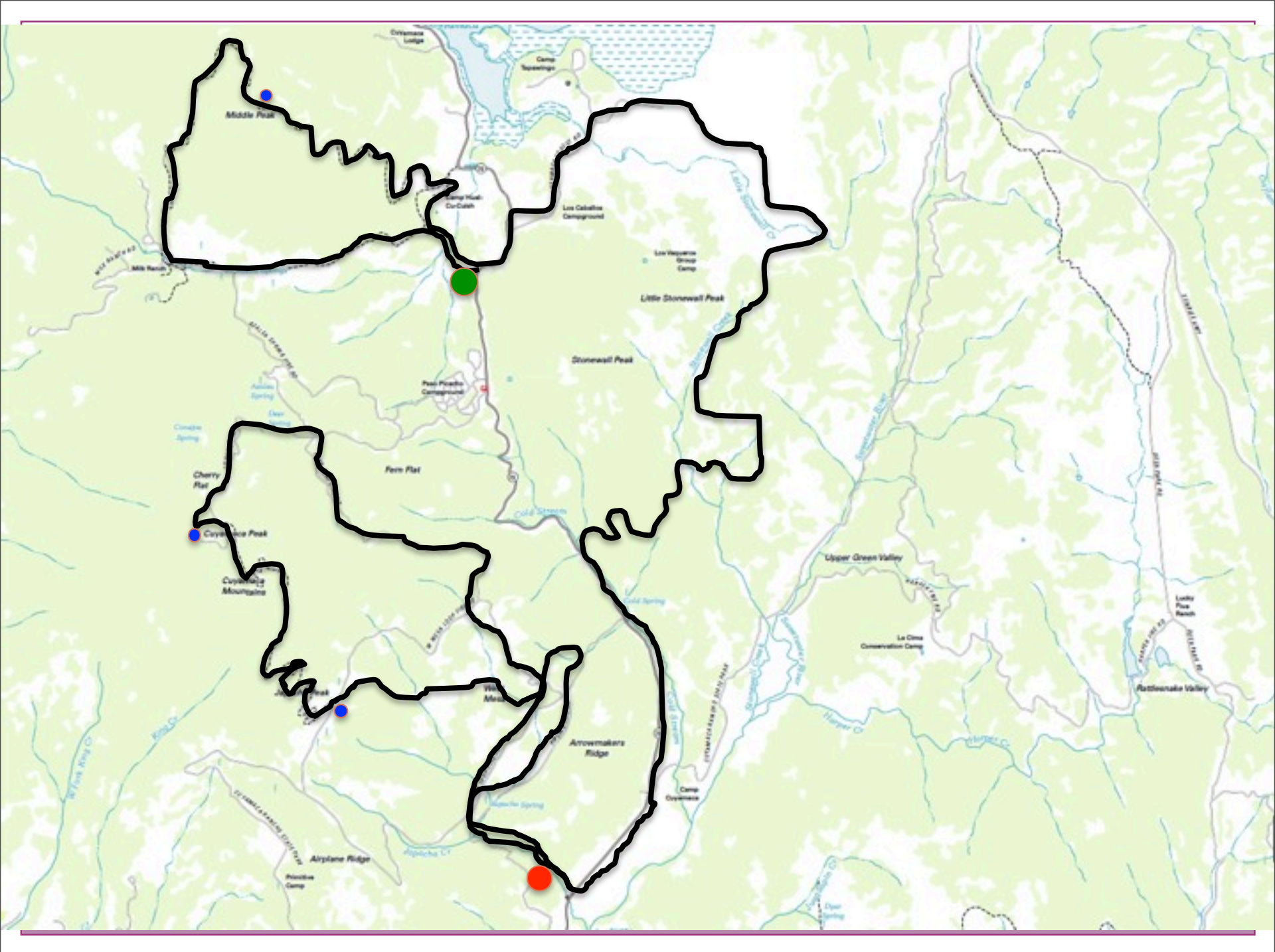
: the art or science of making maps that show the height, shape, etc., of the land in a particular area

: the features (such as mountains and rivers) in an area of land

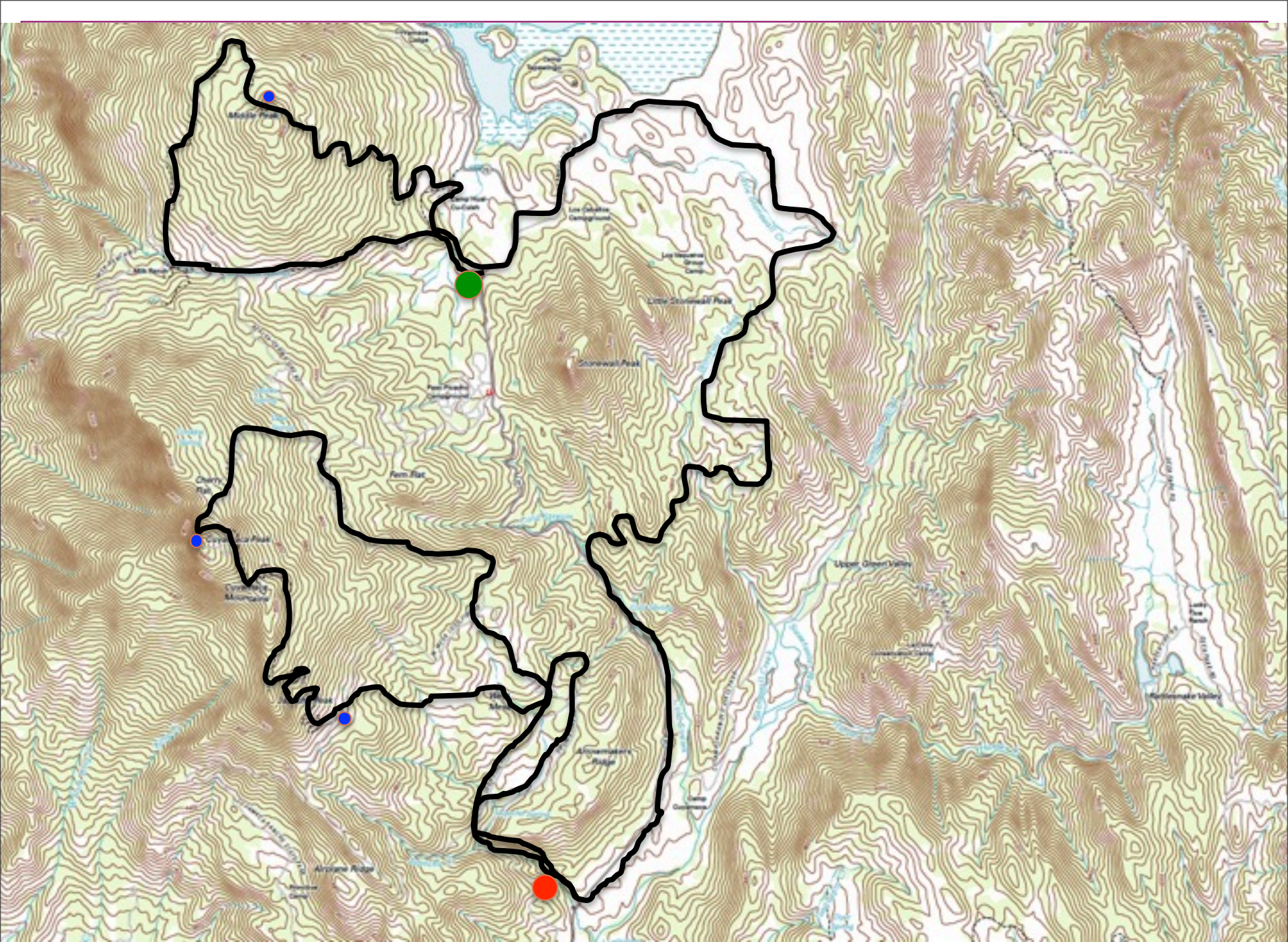




Monday, November 4, 13



Monday, November 4, 13



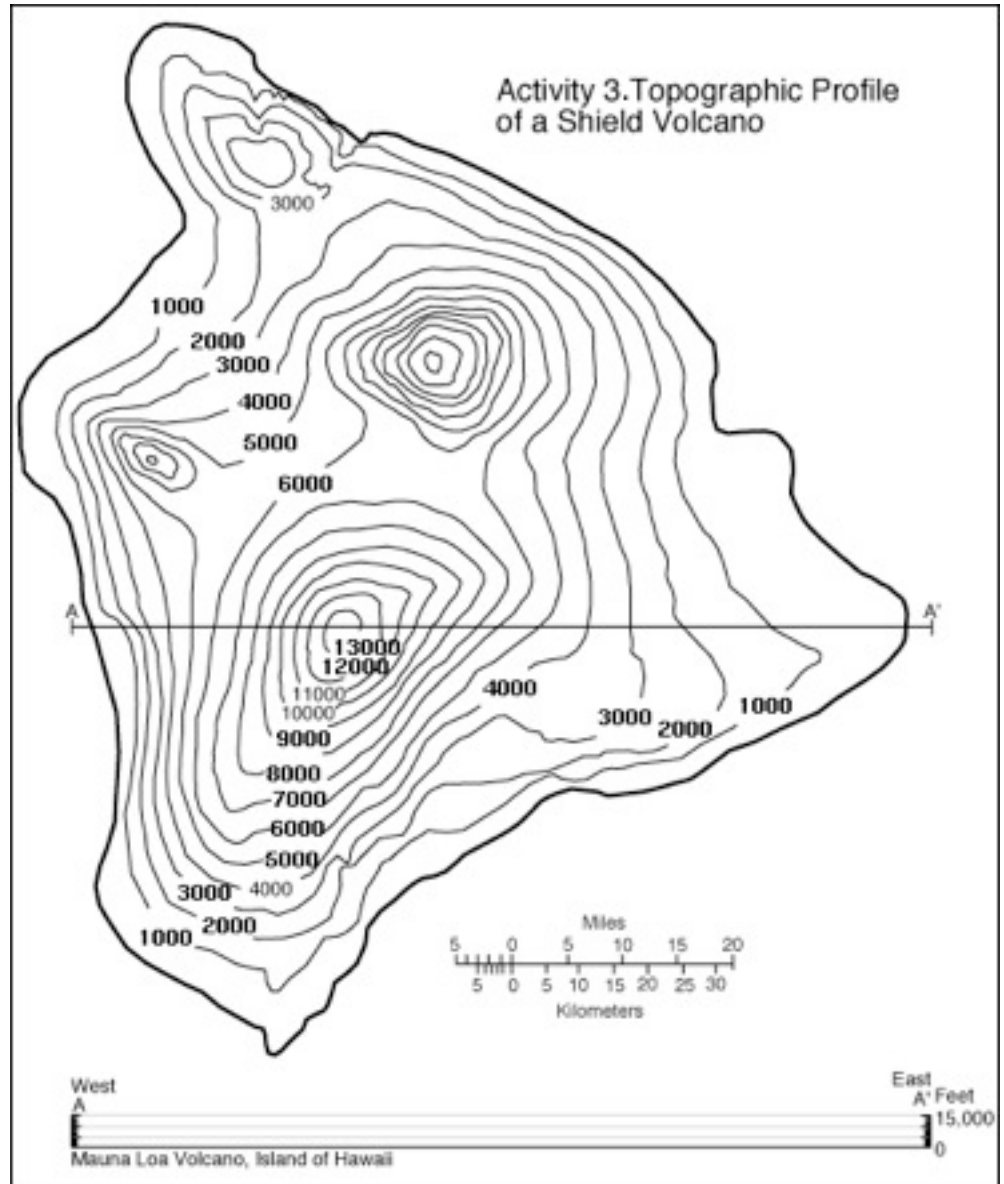
Monday, November 4, 13

Why topo maps?

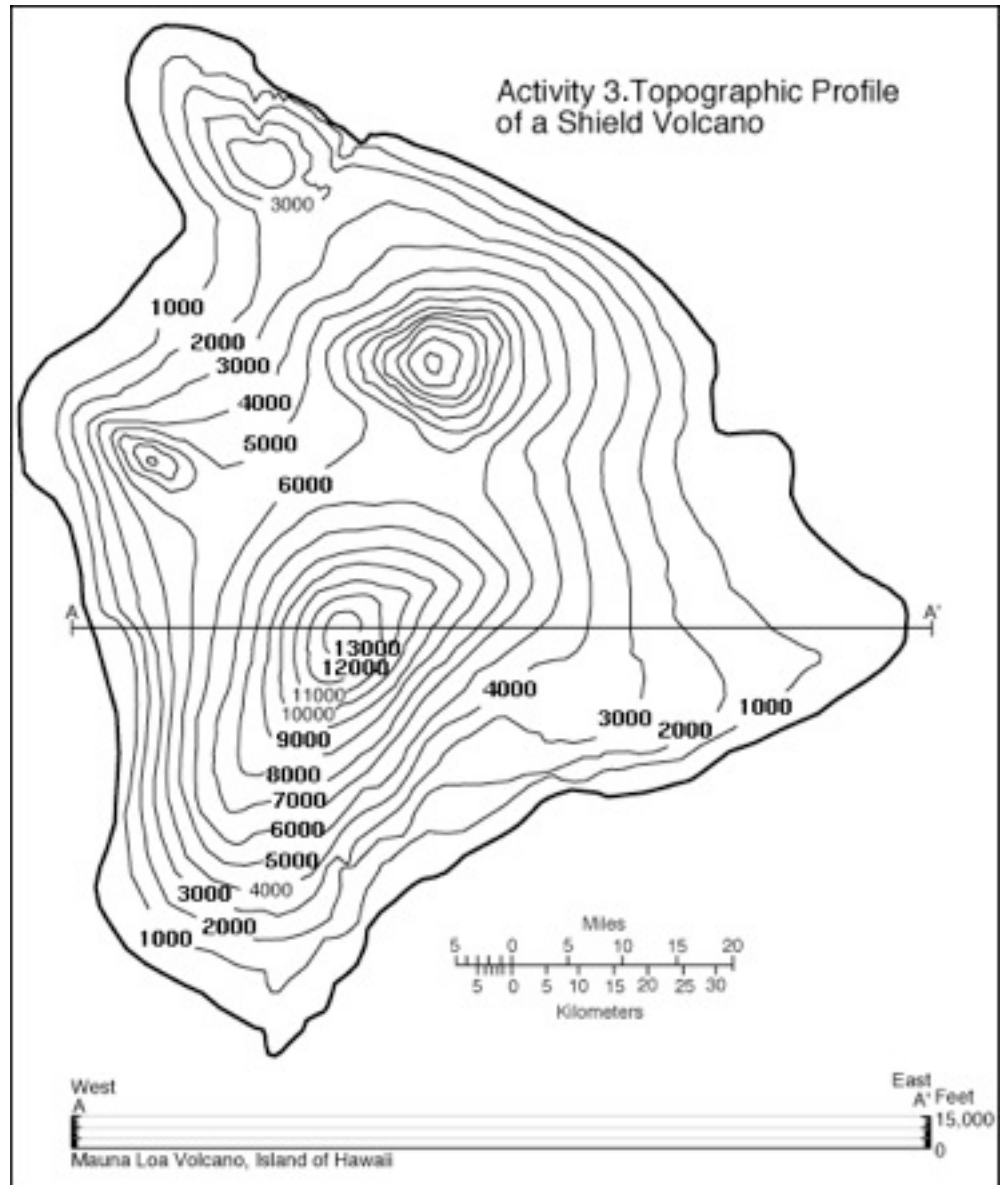




Activity 3. Topographic Profile of a Shield Volcano

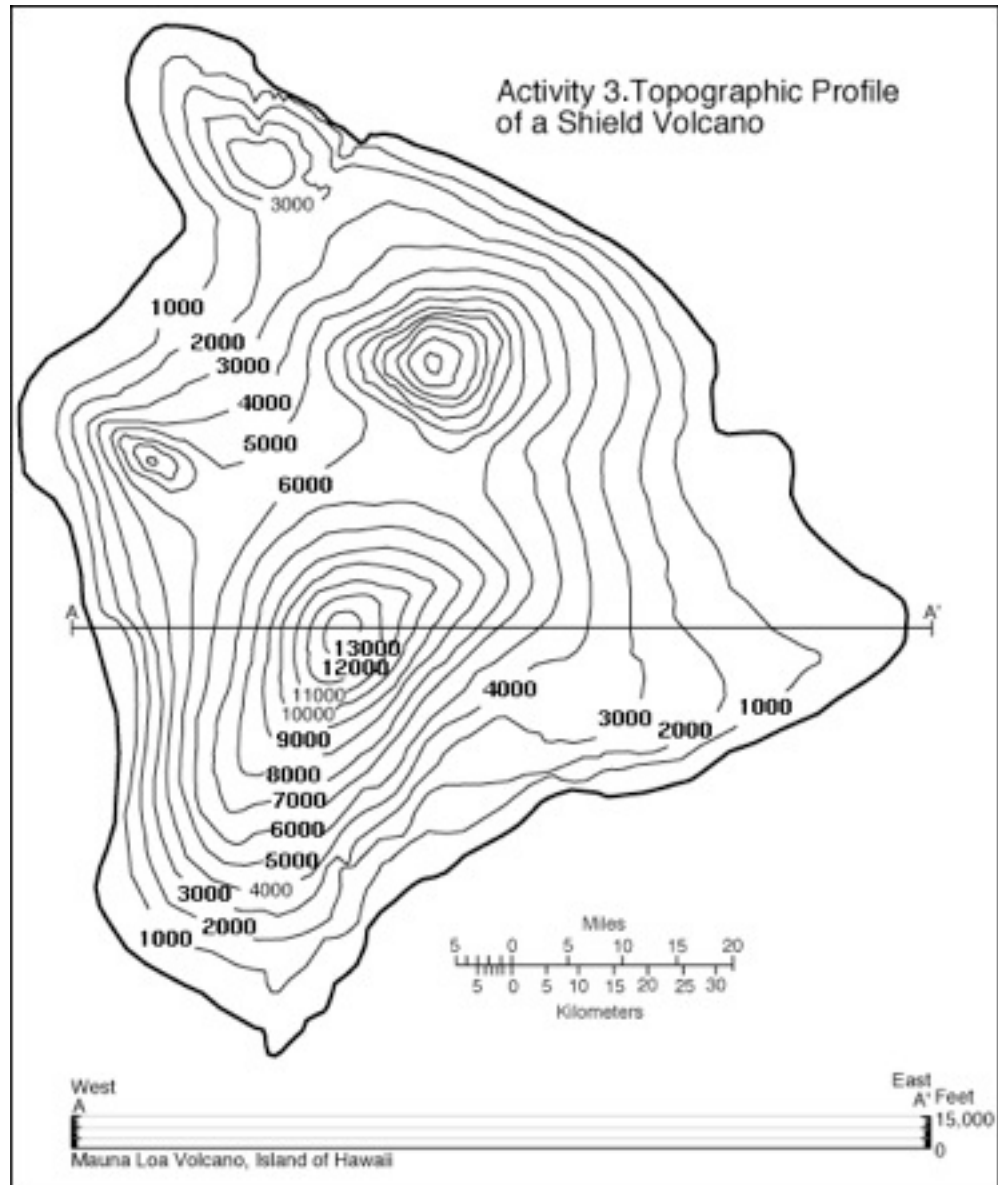


Elevation



Elevation

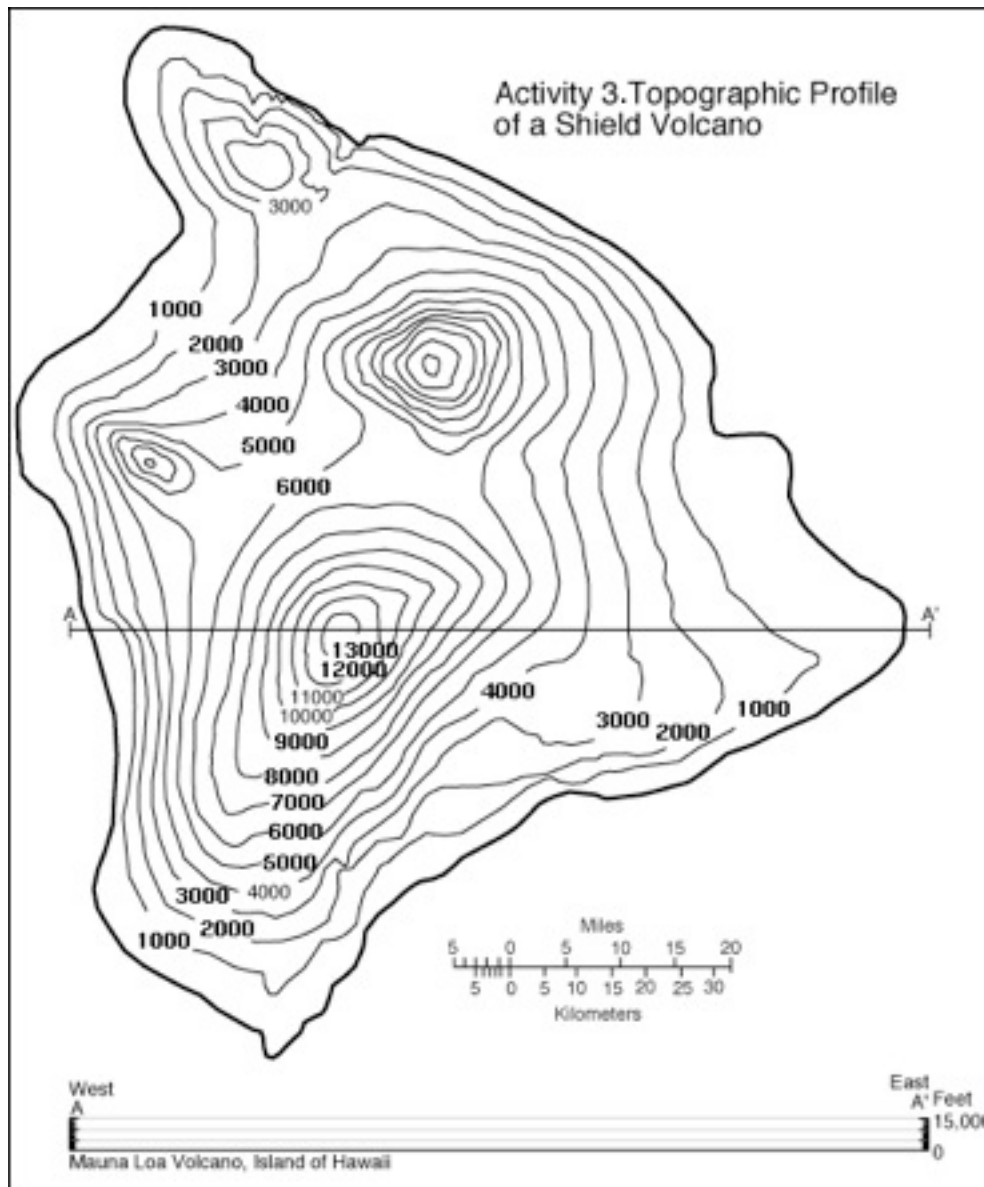
Height of a place relative to a reference height.



Elevation

Height of a place relative to a reference height.

Contour Line

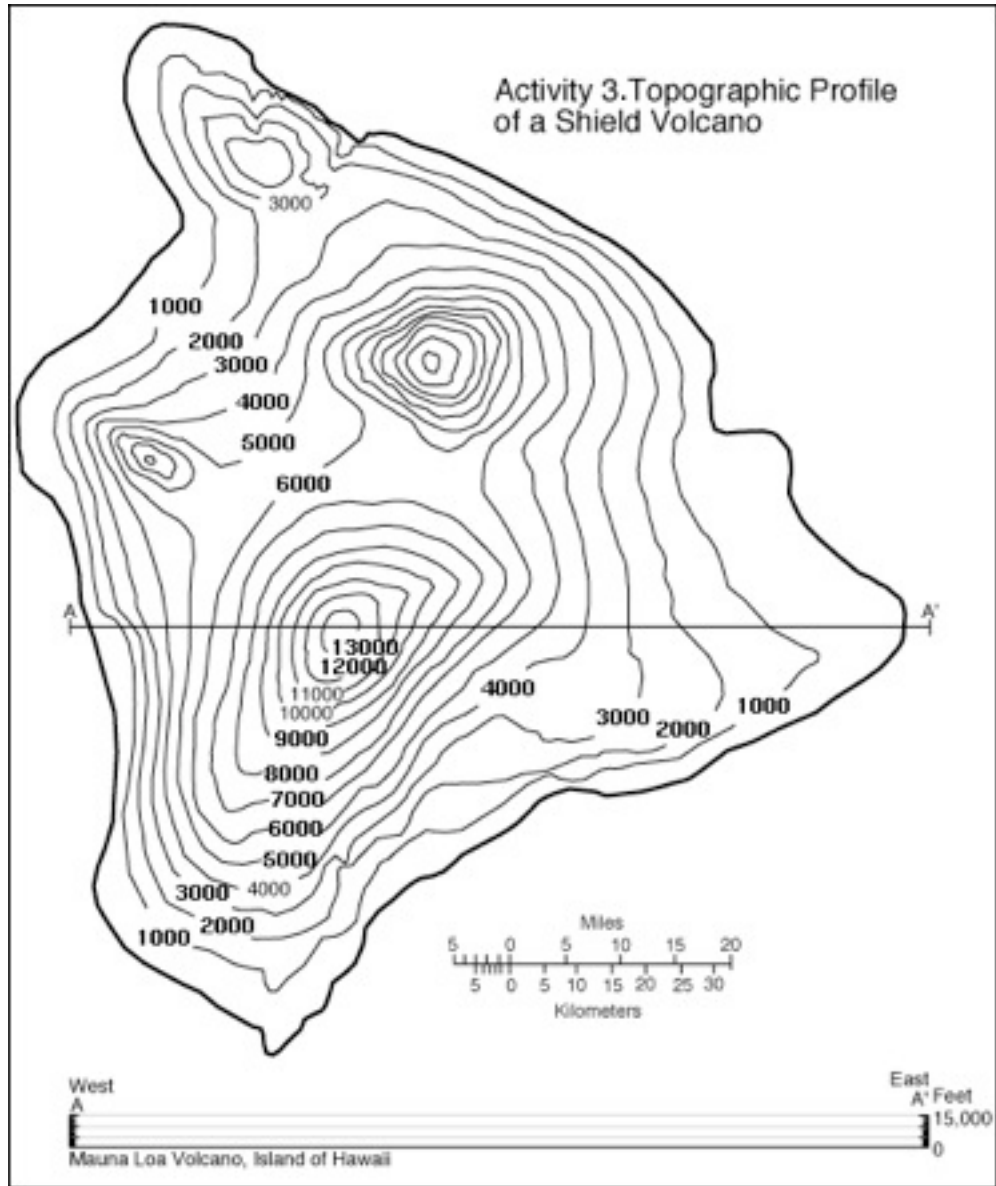


Elevation

Height of a place relative to a reference height.

Contour Line

A line connecting points that have the same elevation.

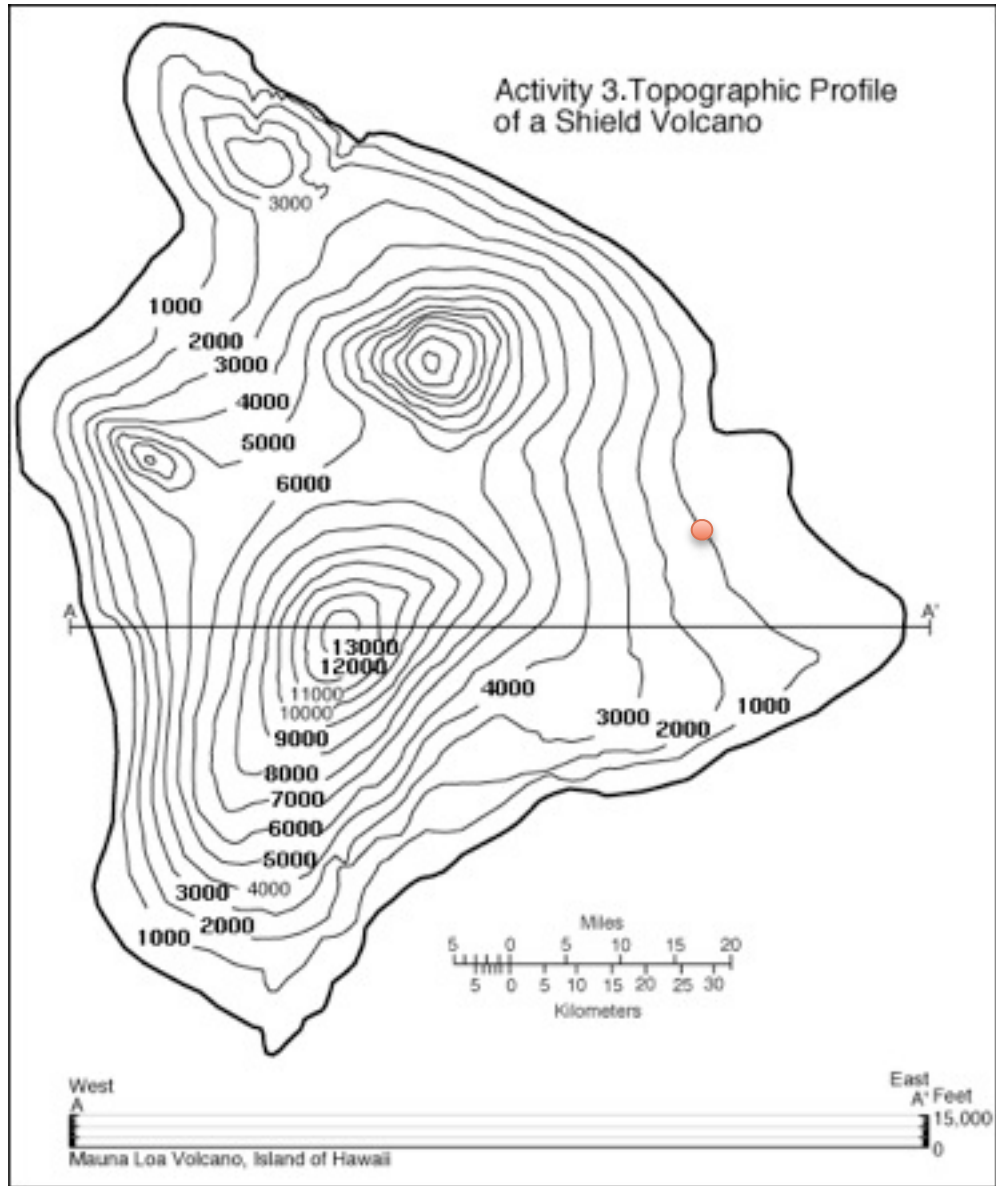


Elevation

Height of a place relative to a reference height.

Contour Line

A line connecting points that have the same elevation.

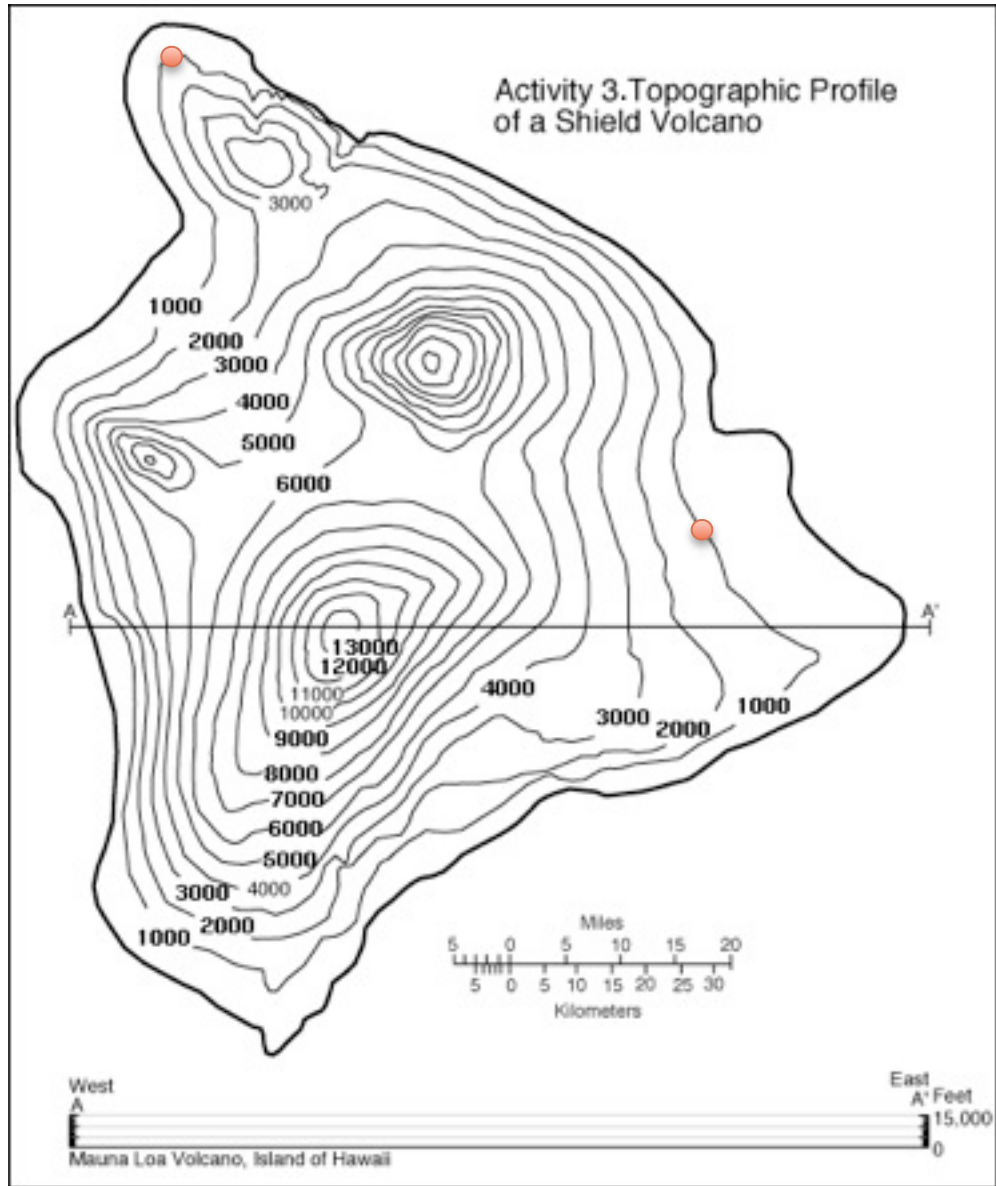


Elevation

Height of a place relative to a reference height.

Contour Line

A line connecting points that have the same elevation.

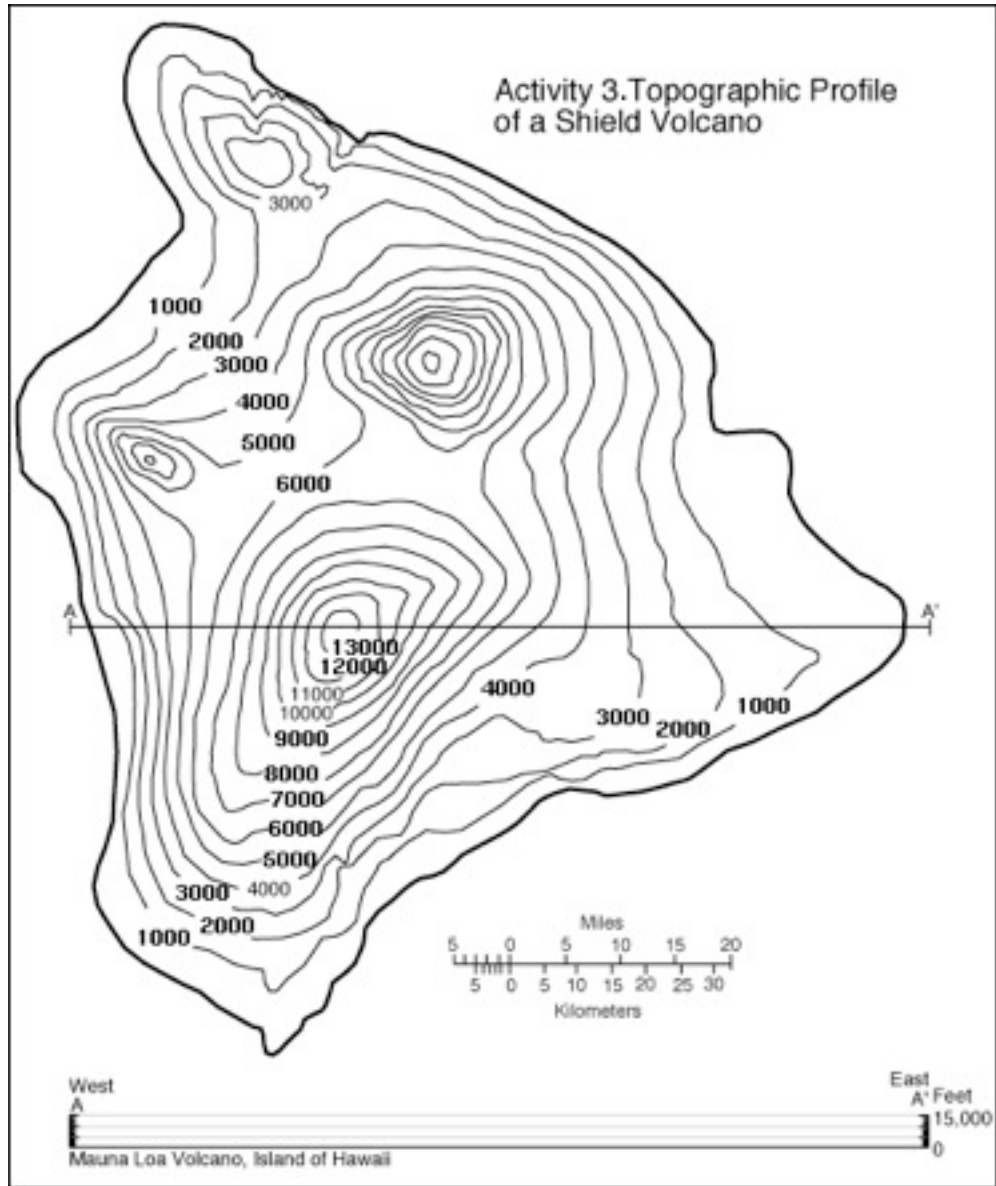


Elevation

Height of a place relative to a reference height.

Contour Line

A line connecting points that have the same elevation.



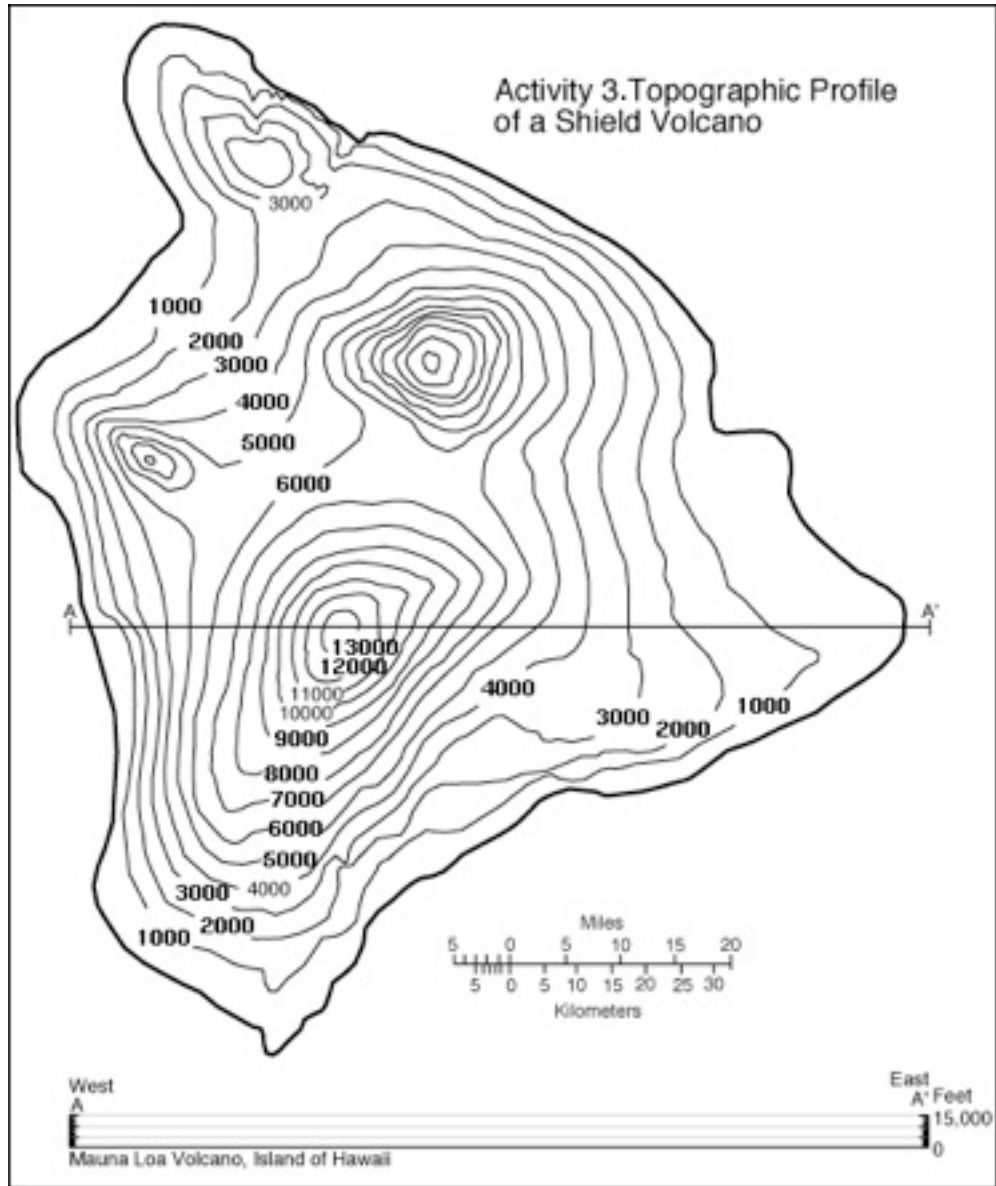
Elevation

Height of a place relative to a reference height.

Contour Line

A line connecting points that have the same elevation.

Contour Interval



Elevation

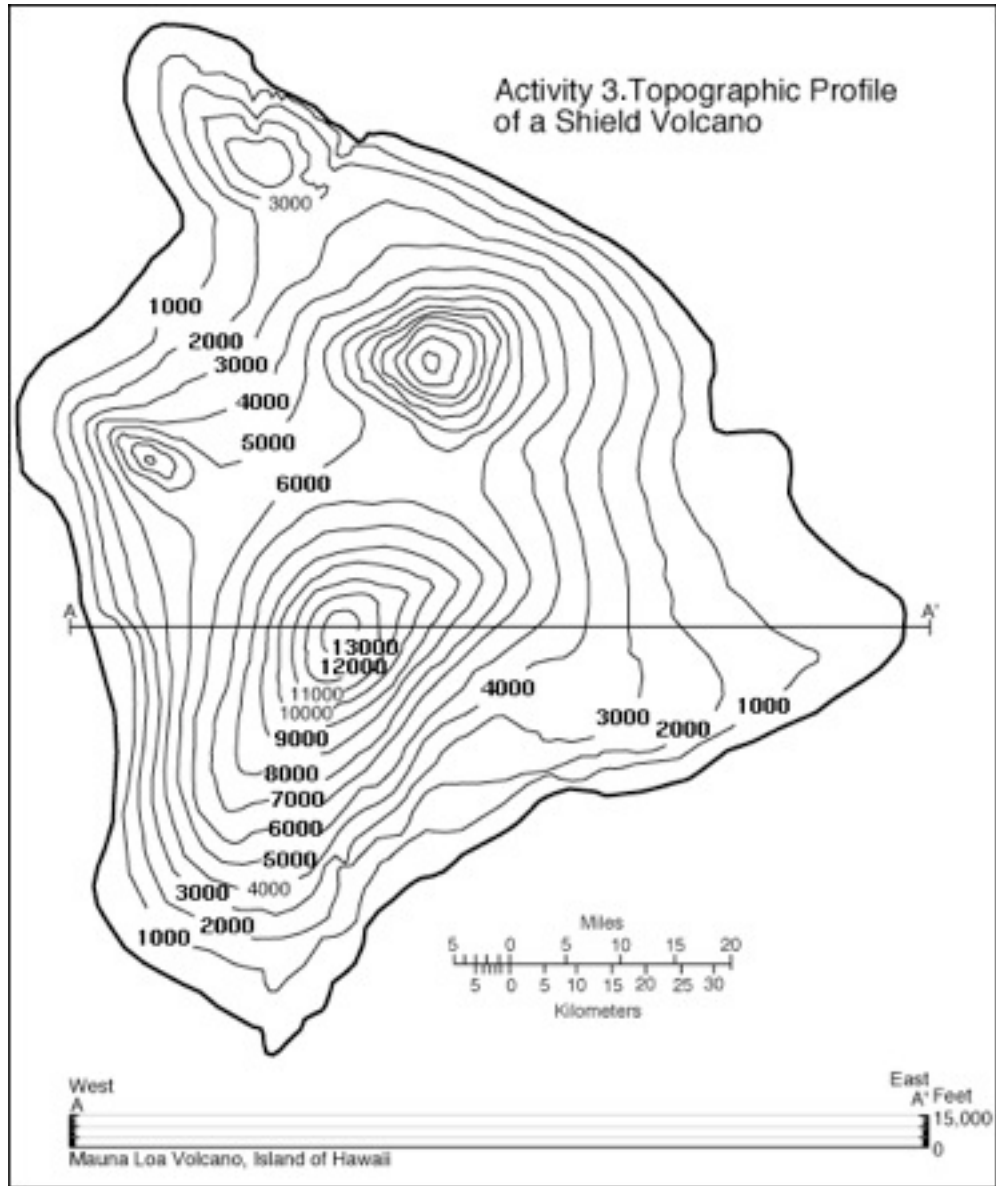
Height of a place relative to a reference height.

Contour Line

A line connecting points that have the same elevation.

Contour Interval

The difference in elevation between two adjacent contour lines.



Elevation

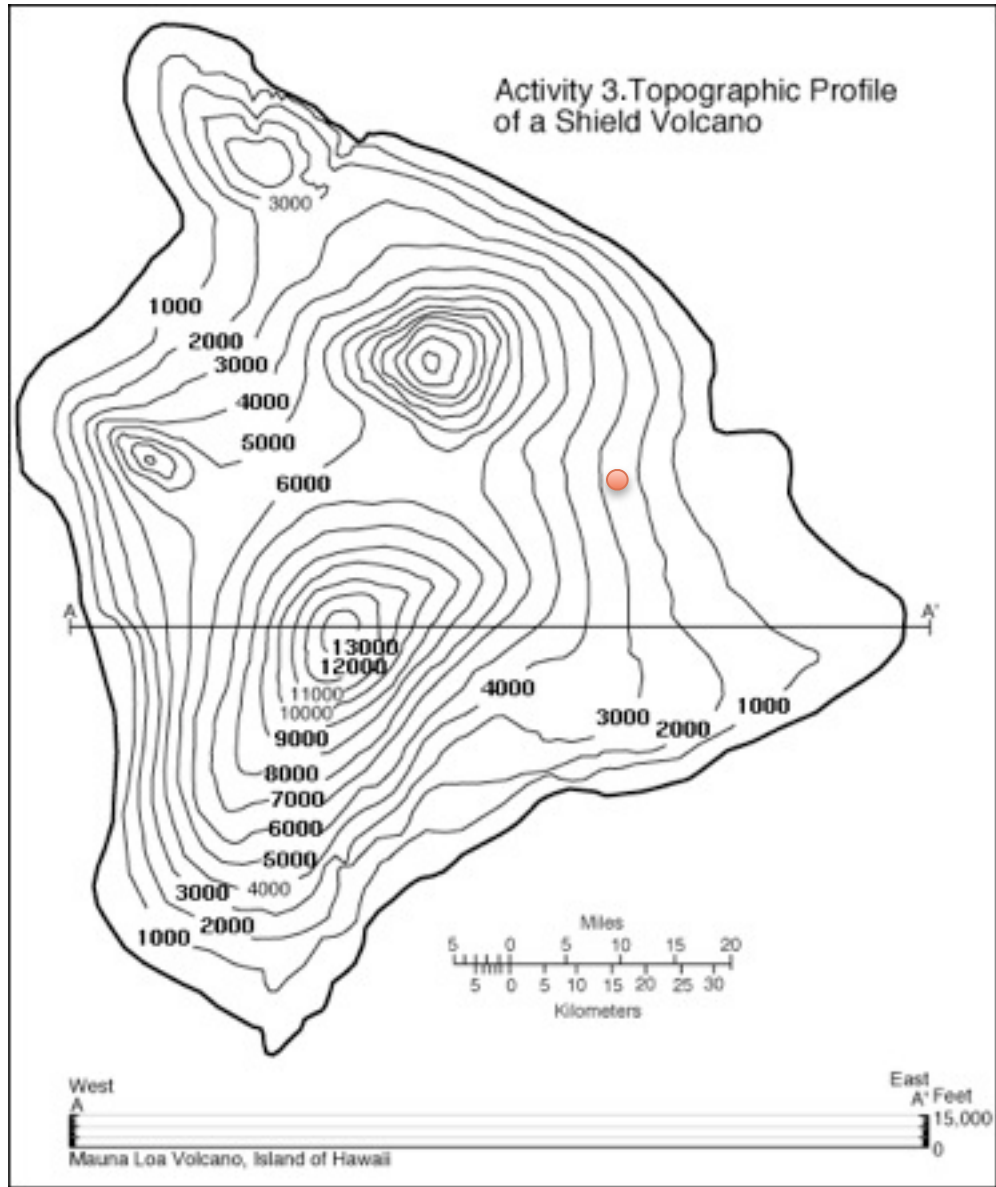
Height of a place relative to a reference height.

Contour Line

A line connecting points that have the same elevation.

Contour Interval

The difference in elevation between two adjacent contour lines.



Elevation

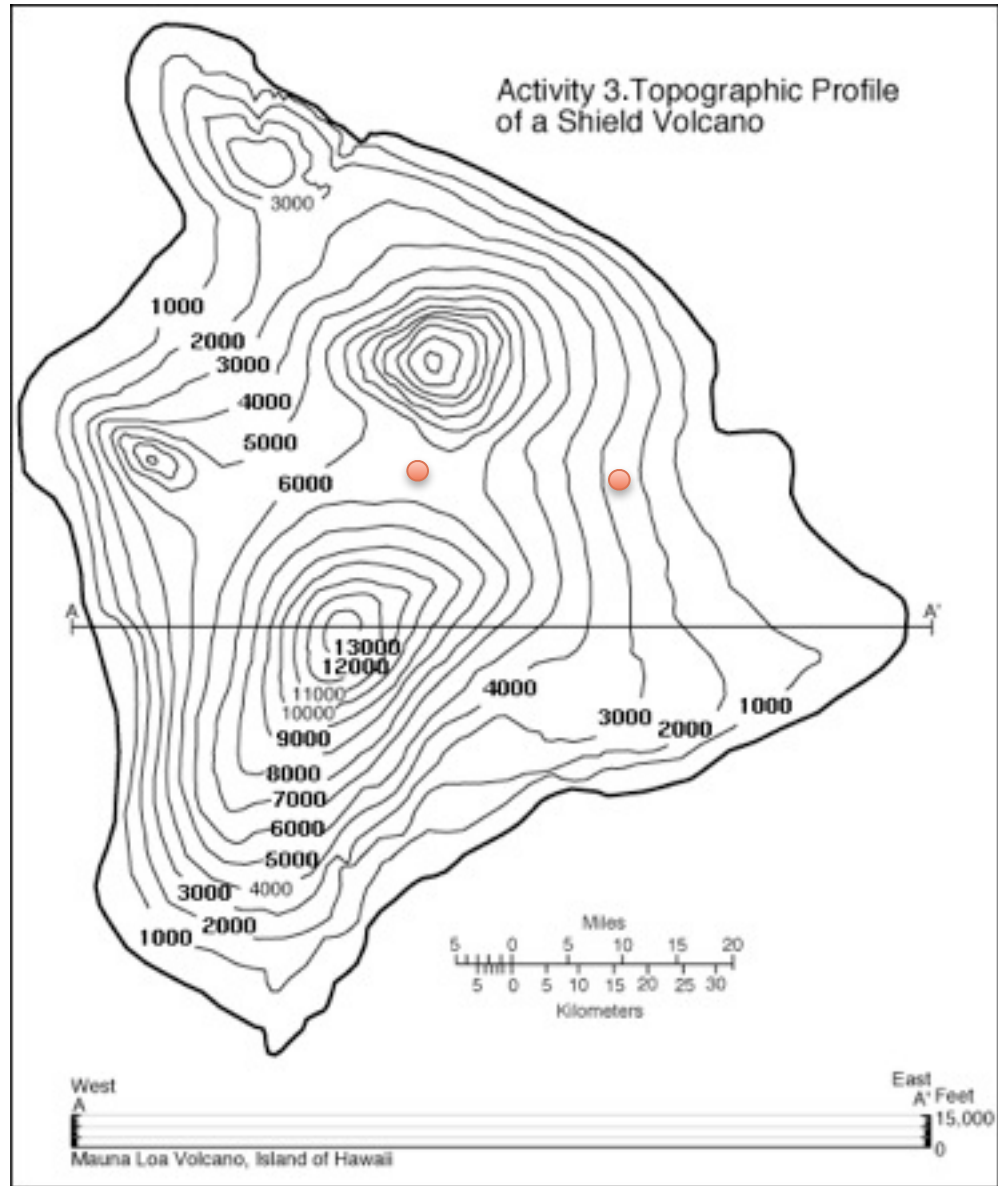
Height of a place relative to a reference height.

Contour Line

A line connecting points that have the same elevation.

Contour Interval

The difference in elevation between two adjacent contour lines.



Elevation

Height of a place relative to a reference height.

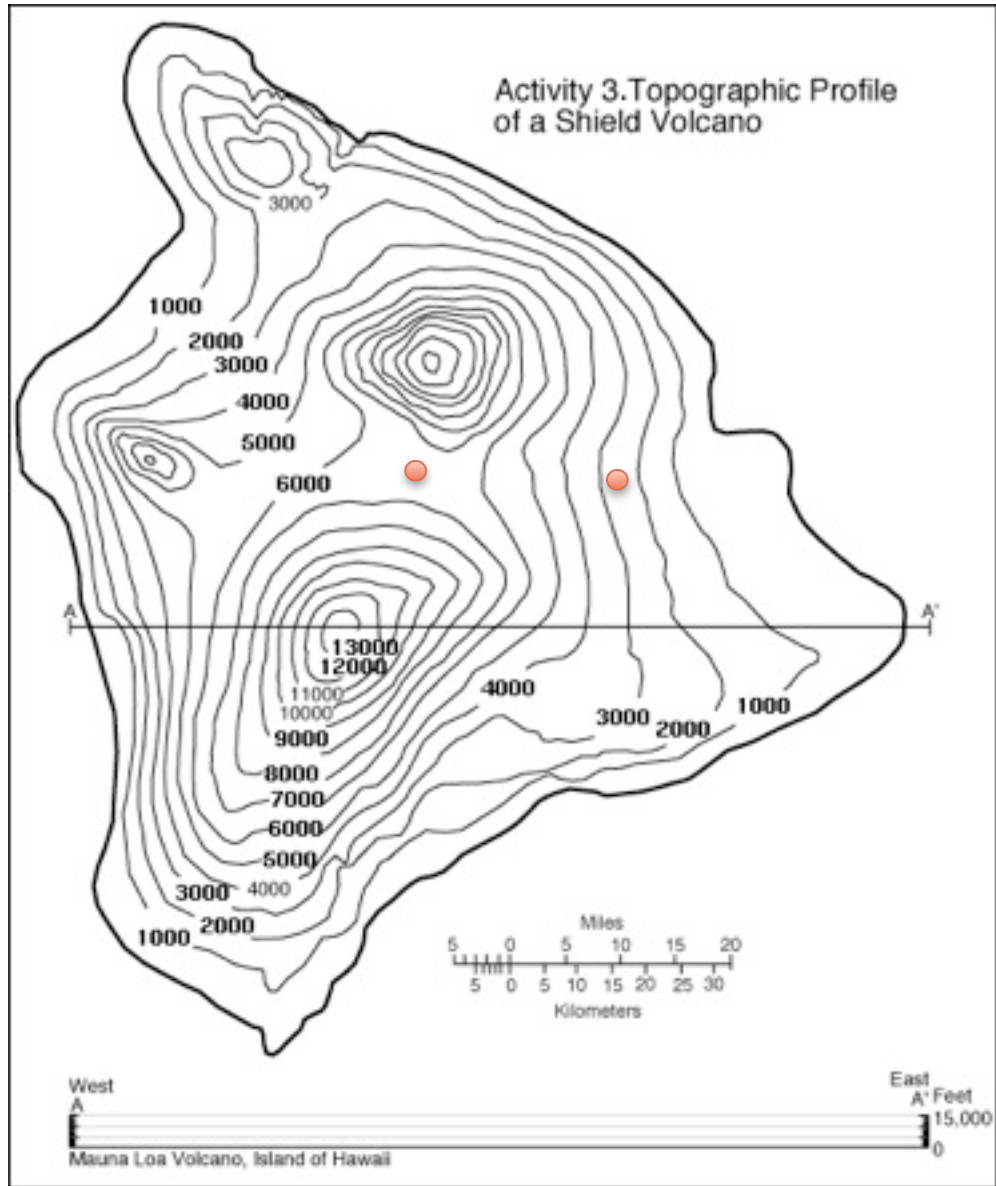
Contour Line

A line connecting points that have the same elevation.

Contour Interval

The difference in elevation between two adjacent contour lines.

Depression Contour



Elevation

Height of a place relative to a reference height.

Contour Line

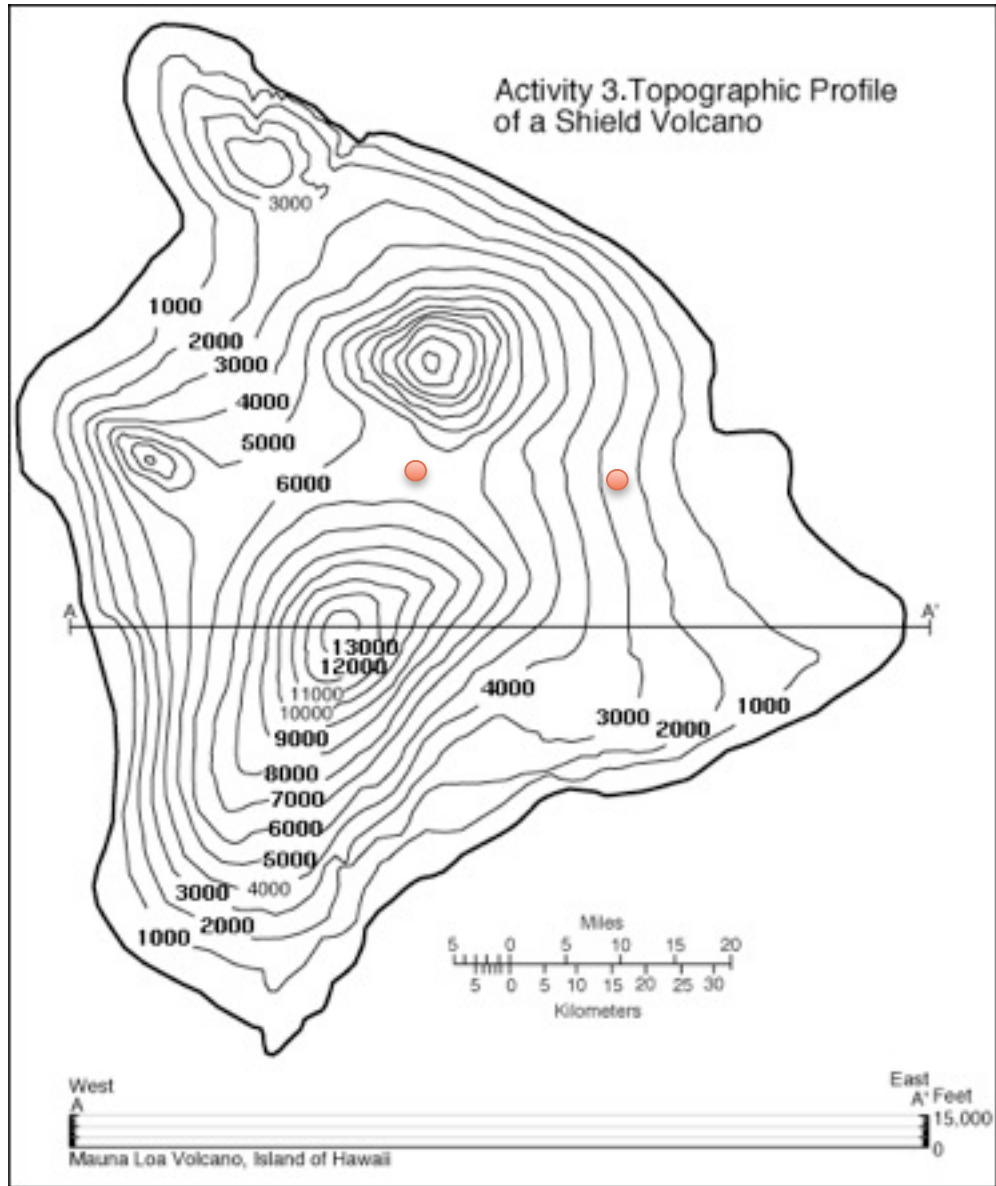
A line connecting points that have the same elevation.

Contour Interval

The difference in elevation between two adjacent contour lines.

Depression Contour

Contour lines indicating a downward slope (drawn with hatch marks).





Elevation

Height of a place relative to a reference height.

Contour Line

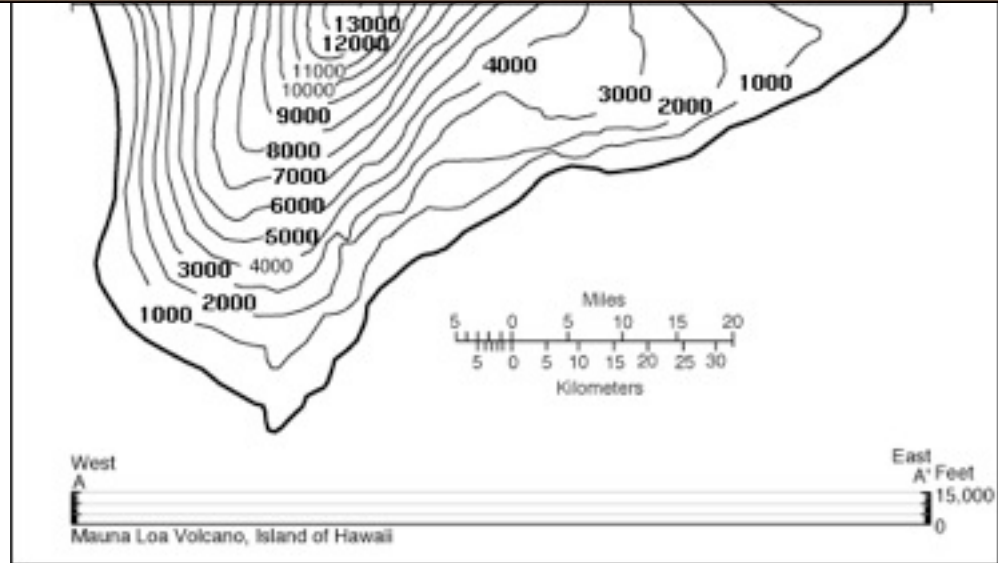
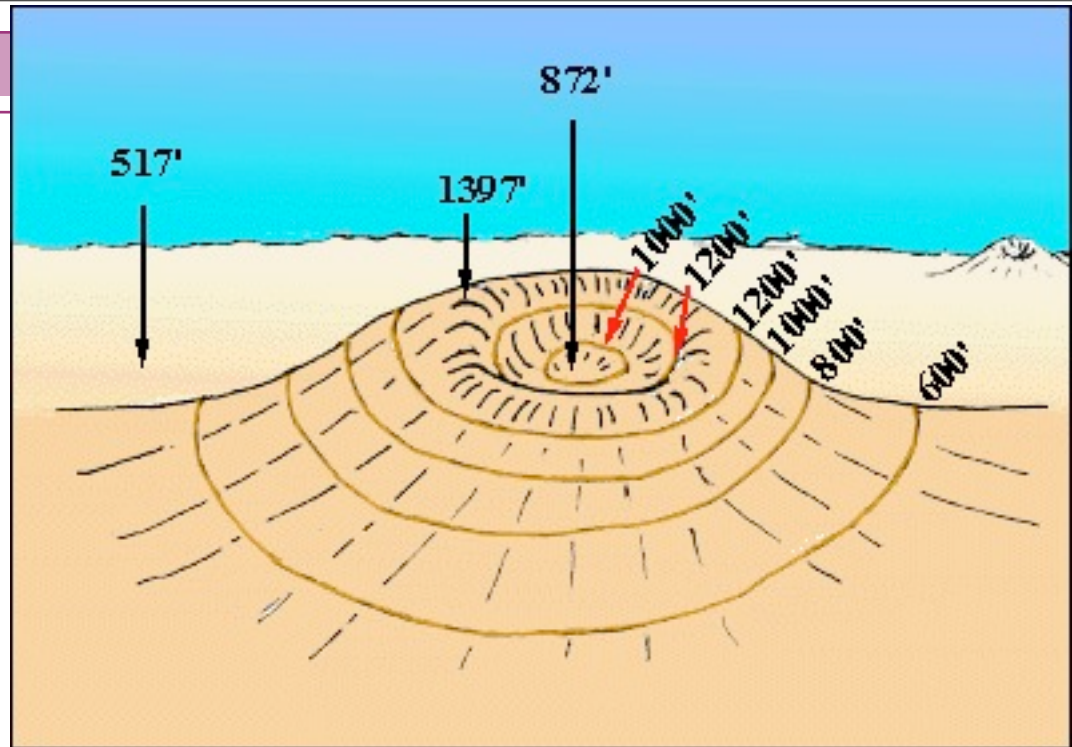
A line connecting points that have the same elevation.

Contour Interval

The difference in elevation between two adjacent contour lines.

Depression Contour

Contour lines indicating a downward slope (drawn with hatch marks).





Elevation

Height of a place relative to a reference height.

Contour Line

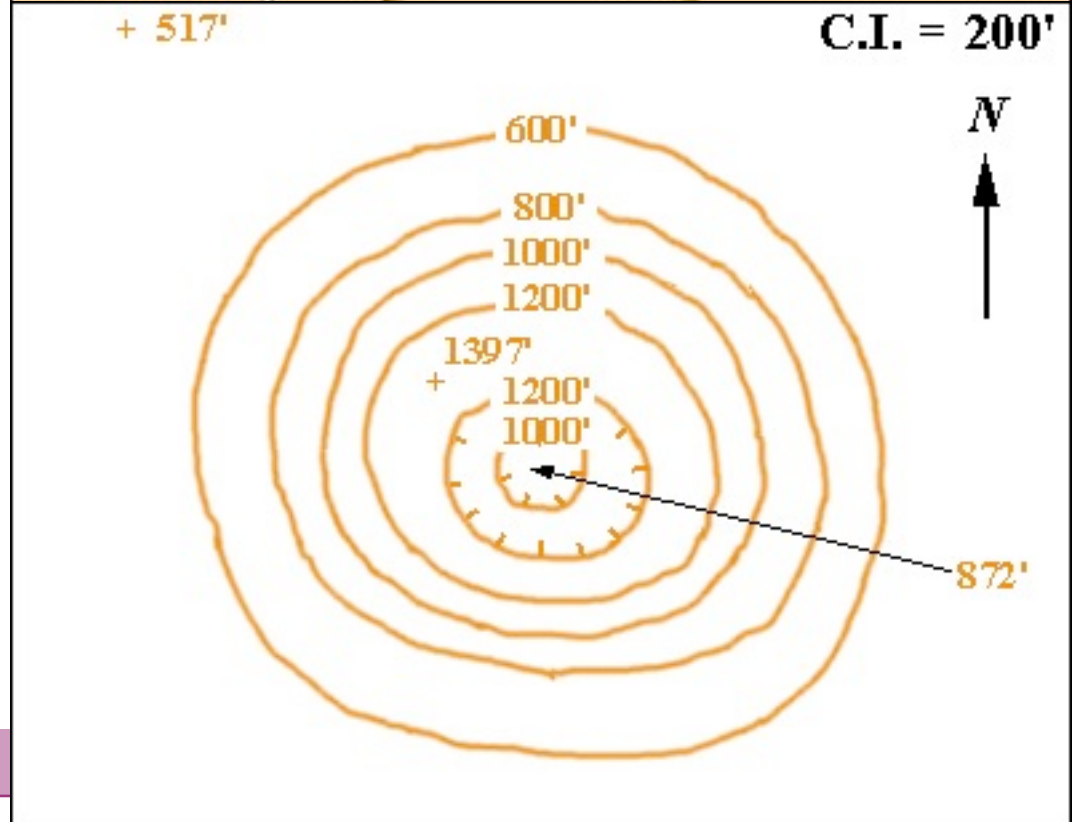
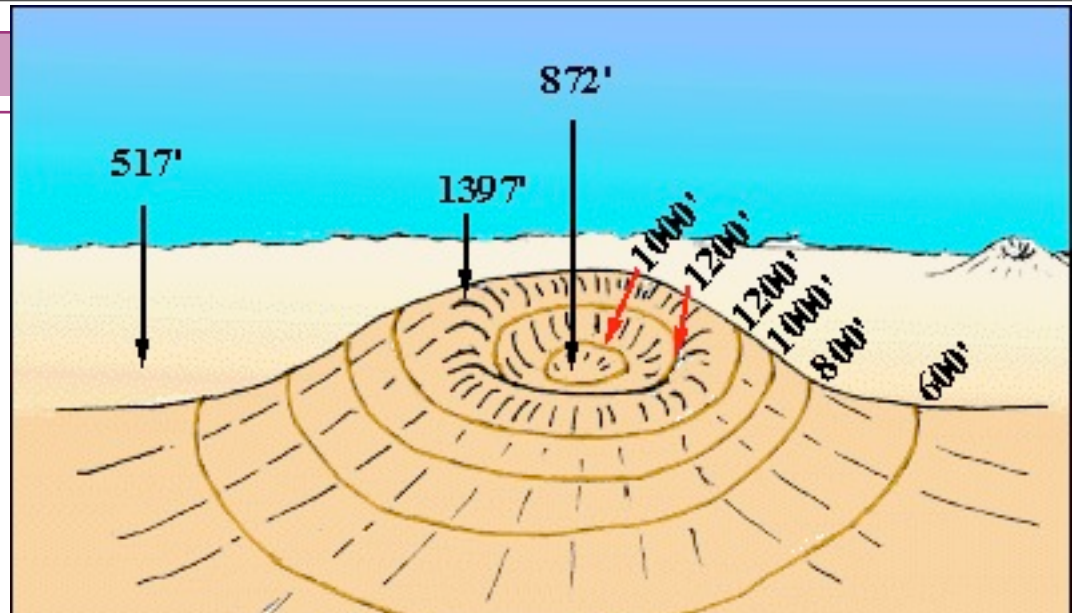
A line connecting points that have the same elevation.

Contour Interval

The difference in elevation between two adjacent contour lines.

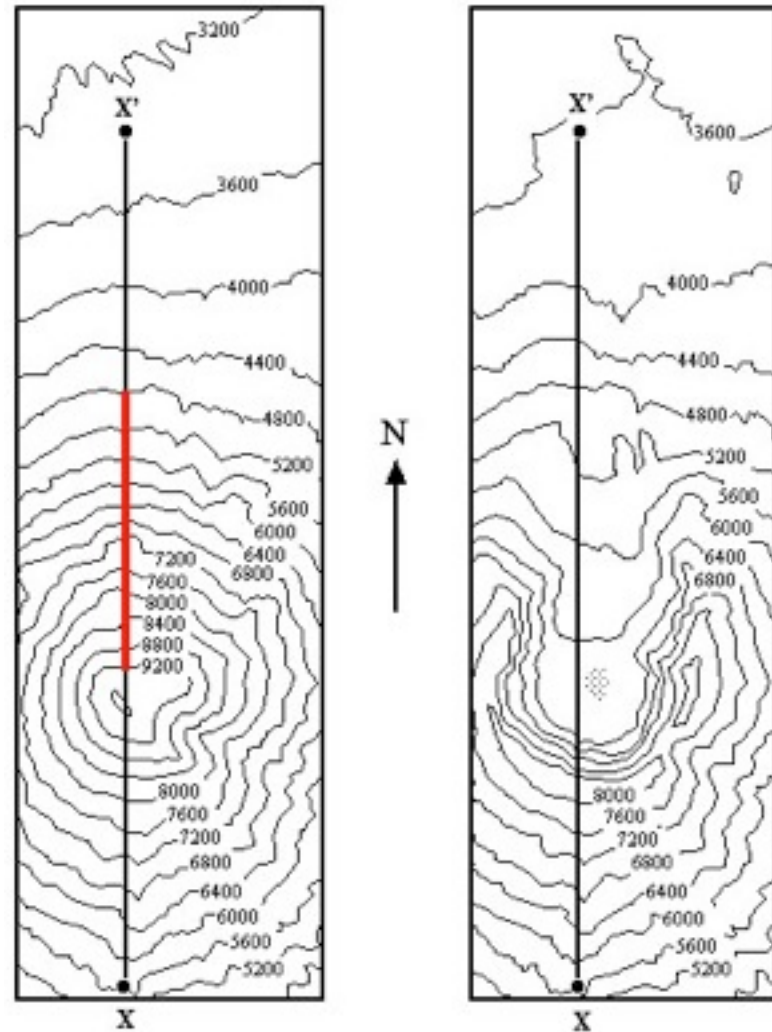
Depression Contour

Contour lines indicating a downward slope (drawn with hatch marks).





Mount St. Helens



BEFORE May 18, 1980 eruption

AFTER May 18, 1980 eruption

Elevations, feet above sea level
Contour Interval, 400'

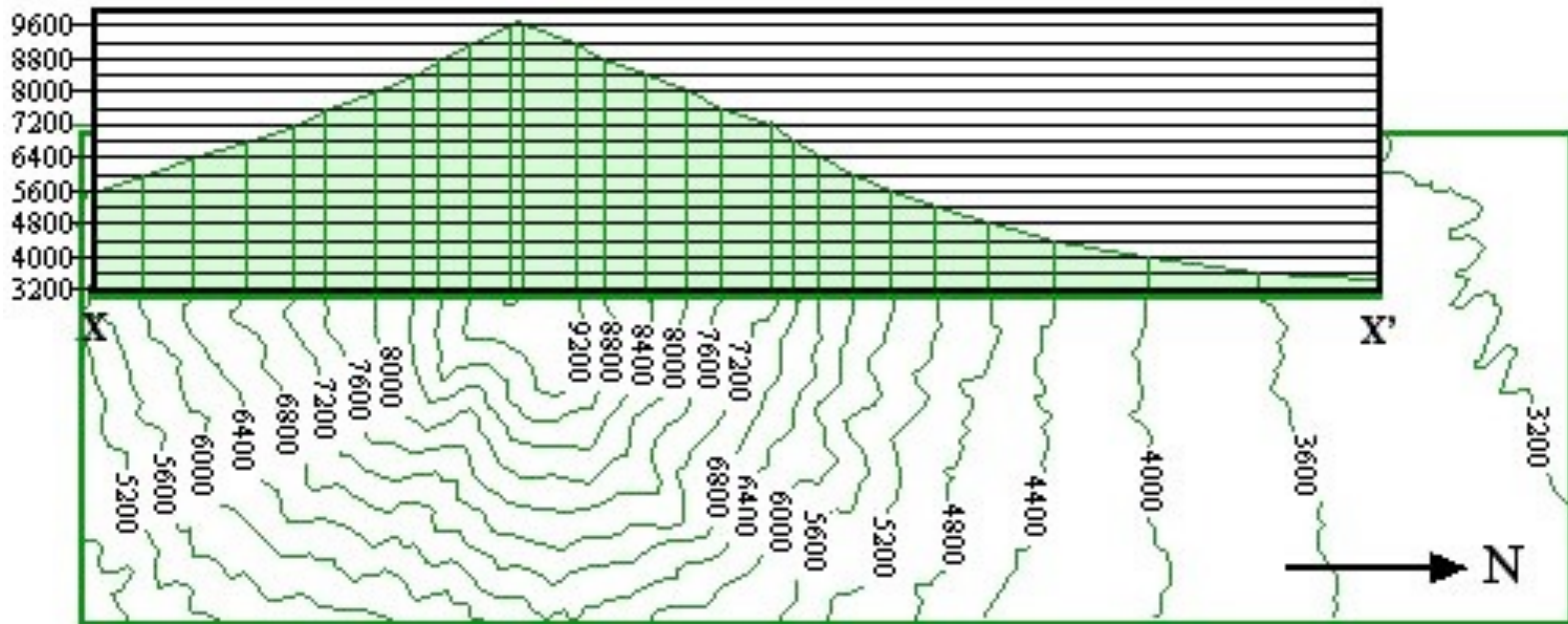
5,000 ft.

Lava dome

Mount St. Helens Eruption



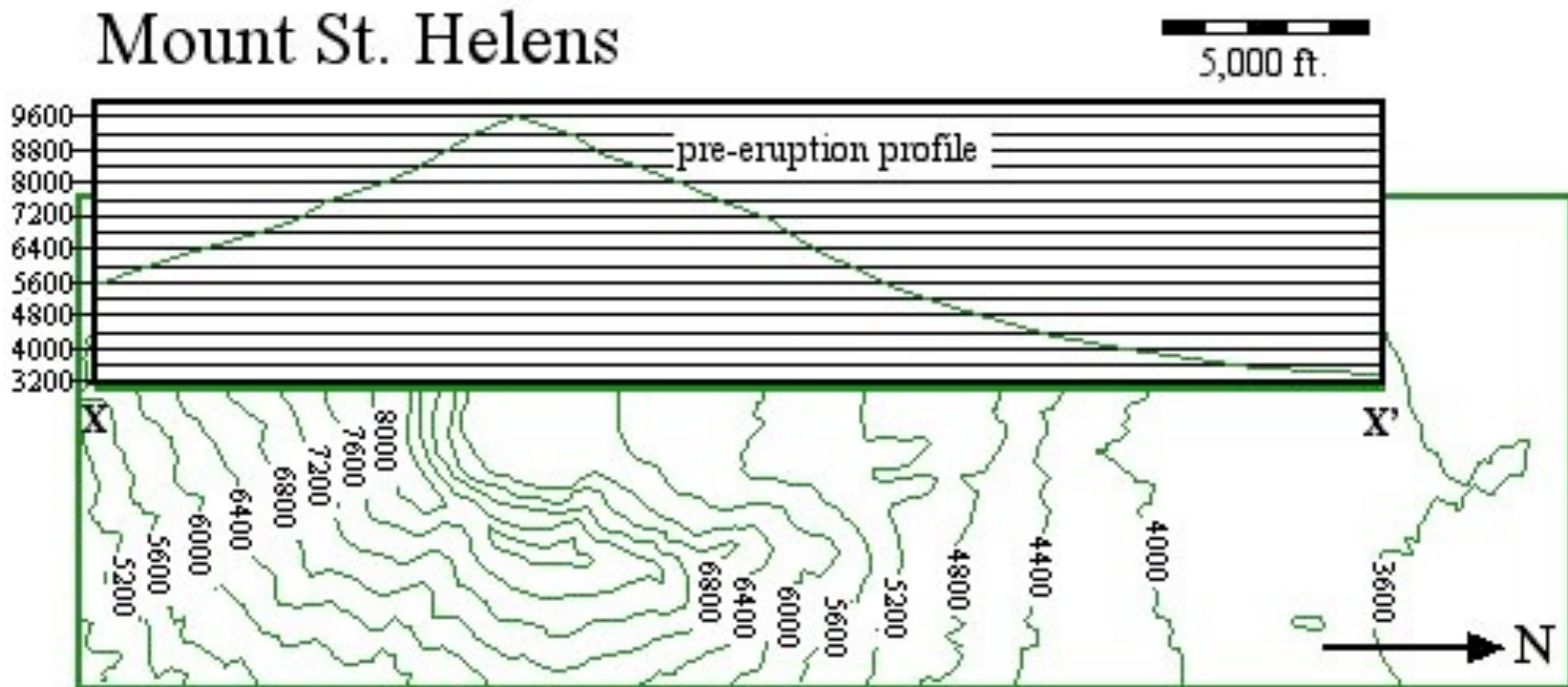
Mount St. Helens, Topographic Profile



Before May 18, 1980 eruption

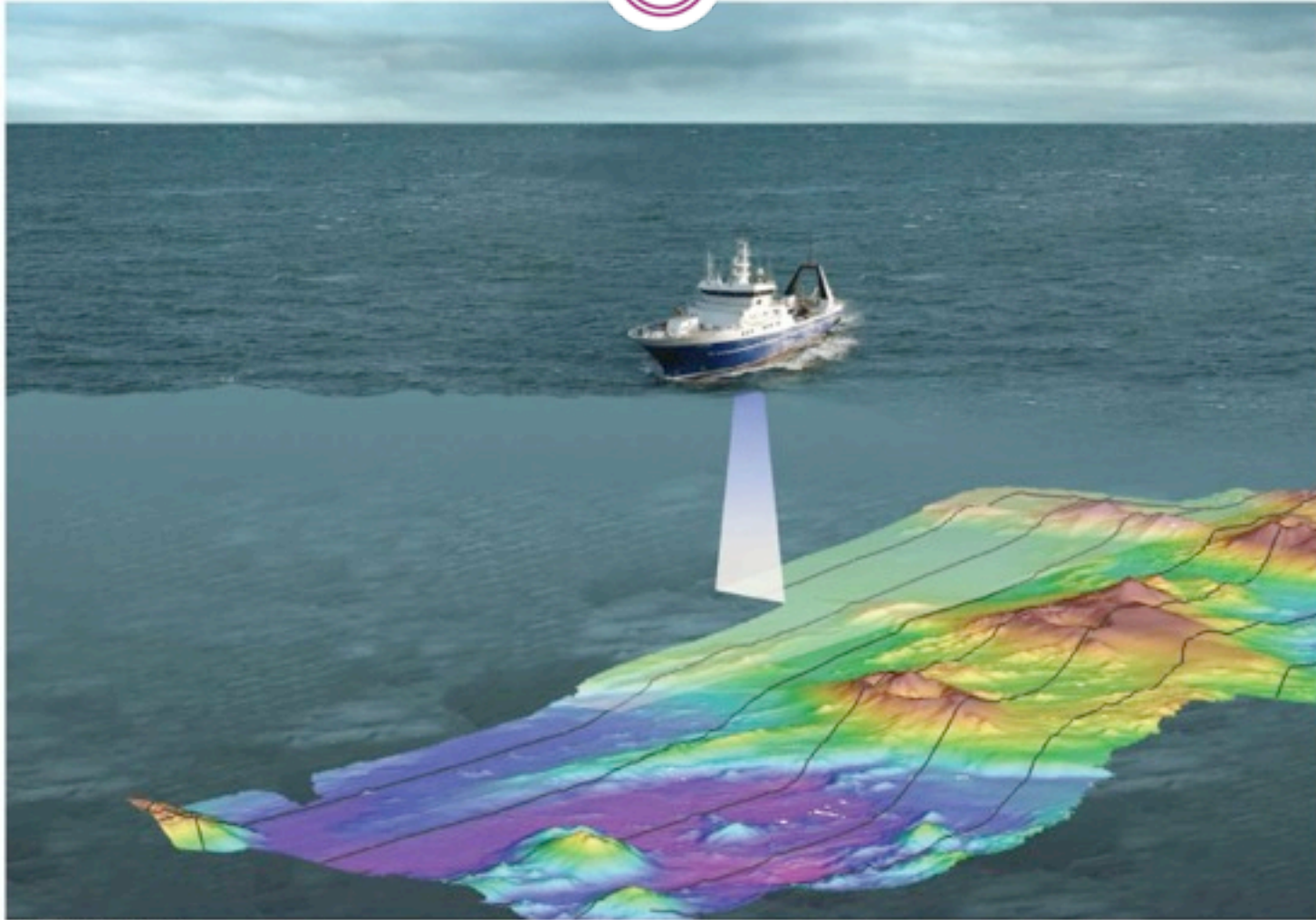
5,000 ft.

Mount St. Helens Eruption



Topographic map after May 18, 1980 eruption

Topography in the Ocean - Bathymetry



© 2011 Pearson Education, Inc.

Topographic Mapping Practice



Use the topographic plots labeled A, B and C below to answer the practice questions. Assume the contour interval is given in feet.

